

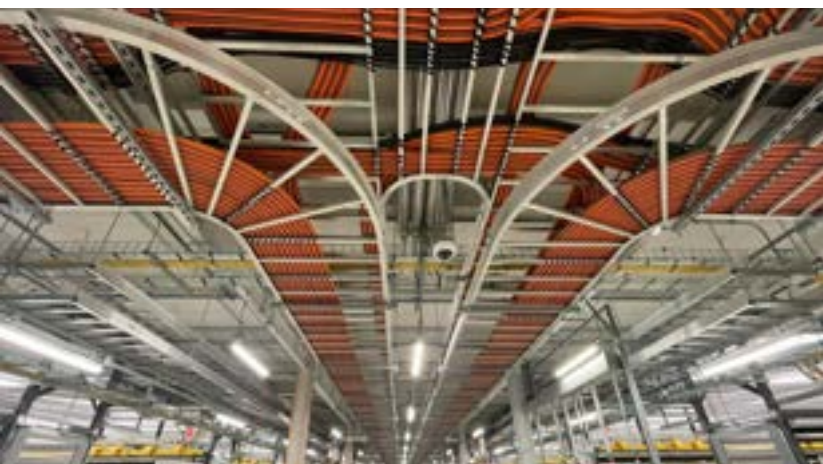
# Built for Hyperscale. Engineered for the Future.

## Infrastructure Solutions for the Hyperscale Industry

In the era of cloud computing, artificial intelligence, and massive data growth, hyperscale environments are the engine powering global digital transformation. These facilities demand infrastructure that is fast, flexible, secure, and capable of scaling rapidly — with zero tolerance for downtime.

ComNet Communications specializes in delivering enterprise-grade infrastructure solutions designed for the unique demands of hyperscale operations. From greenfield deployments to large-scale expansions, we provide end-to-end services that enable seamless connectivity, high-capacity data transfer, and intelligent facility management.

Our integrated approach combines structured cabling, wireless connectivity, physical security, and energy-efficient systems — all optimized for high-density, high-performance environments. With a focus on innovation, sustainability, and execution at scale, ComNet helps hyperscale clients build the networks that drive the digital world.



## Why Choose ComNet

- Decades of experience in hyperscale and enterprise deployments
- Scalable Resources: National technician footprint and logistics network
- Operational Consistency: Standardized processes for repeatable, high-quality results
- Client Partnership: Long-term engagements with global enterprises and carriers

## Systems & Solutions

### Structured Cabling & Fiber Optic Networks

- High-speed copper and fiber infrastructure to support massive data volumes
- Single-mode & multimode fiber solutions for ultra-low latency transmission
- Full design, installation, labeling, and documentation for hyperscale standards
- Support for 10G/40G/100G+ networks and beyond

### Network Infrastructure & Wireless Connectivity

- Scalable network architecture for data center and edge environments
- Enterprise Wi-Fi deployment, including predictive and validation surveys
- Distributed Antenna Systems (DAS) for enhanced cellular and 5G coverage
- AP-on-a-Stick (APoS), Ekahau AI Pro testing, and RF optimization

### Security & Access Control Systems

- 24/7 IP-based surveillance systems with remote monitoring capabilities
- Biometric and keycard access control to protect mission-critical areas
- Integrated security solutions that align with NIST and industry compliance
- Power, cabling, and device integration within data center environments

### Data Center & Cloud Integration

- Redundant connectivity solutions for always-on performance
- Robust network backbone to support cloud applications and edge compute
- Scalable infrastructure supporting AI, IoT, and high-density compute environments
- Designed for 99.99% uptime and maximum resiliency

### Smart Monitoring & Energy-Efficient Systems

- Intelligent power distribution and real-time energy management
- Environmental sensors for temperature, humidity, airflow, and security alerts
- Remote monitoring systems for proactive maintenance and uptime assurance
- Sustainable solutions designed to reduce carbon footprint and operating costs